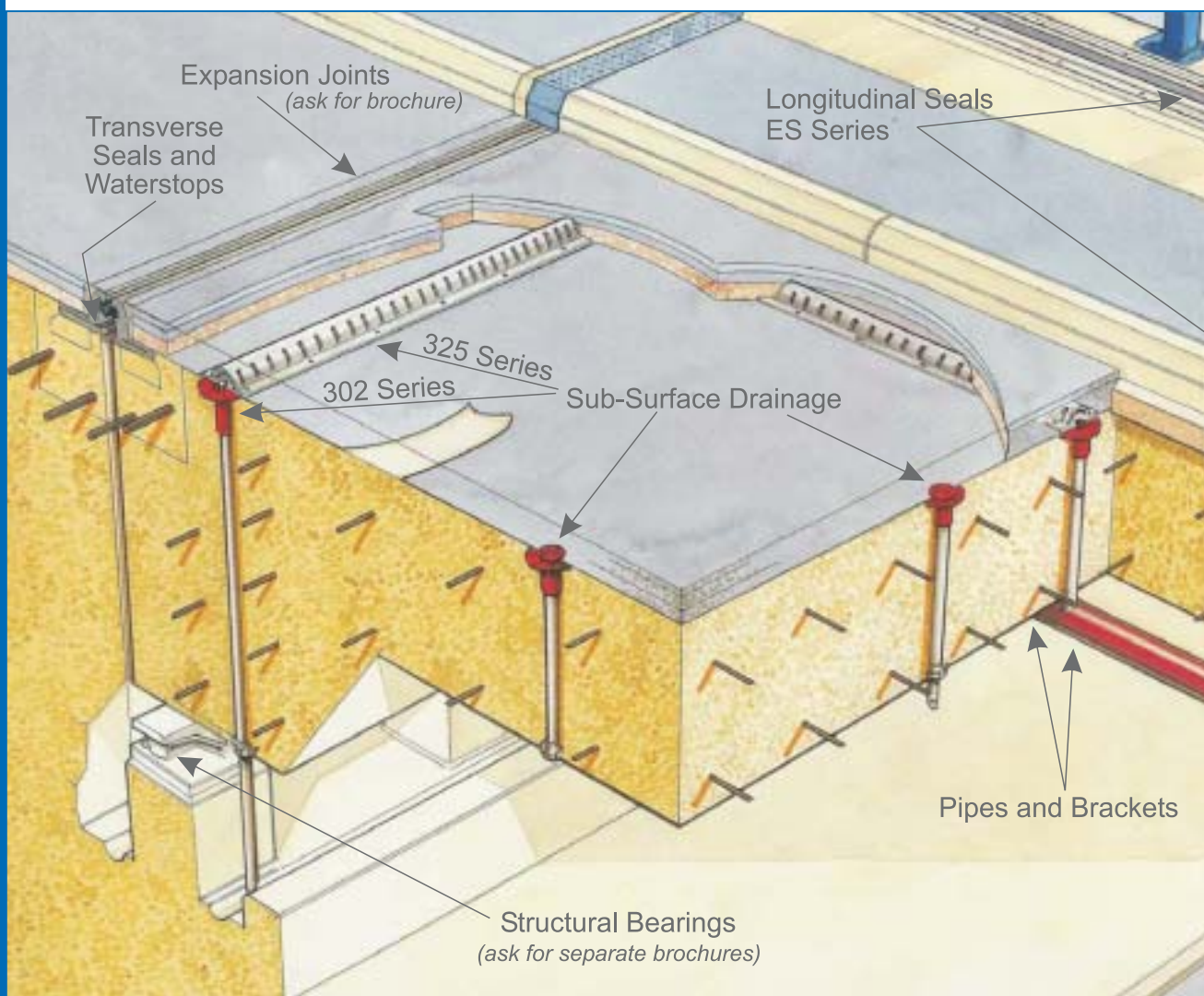


# EKSPAN 300 SERIES



## EKSPAN 302 SYSTEM

The Ekspan 302/51 and 302/2 through deck drain units provide spot sub surface drain points or wide area water collection when used with the 325 channel system. Corresponding 325 outlets will fit into either of the 302/51 or 302/2 funnel types. These are available in 50mm or 32mm. The 32mm system is ideal to drain a bridge deck between pre-stressed beams in retrofit applications.

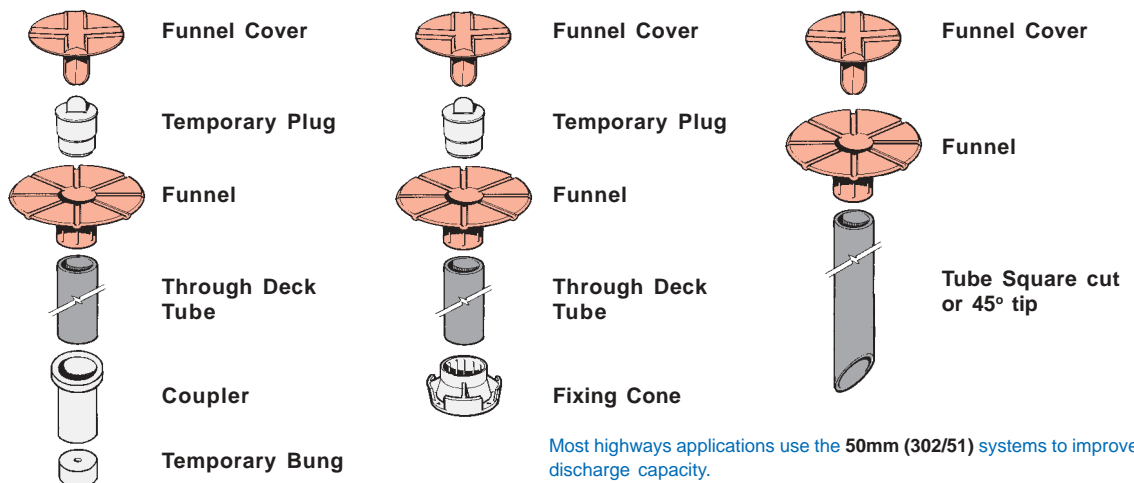
### New Decks

<b>302/51 (C)</b>	50mm
<b>302/2 (C)</b>	32mm

<b>302/51 (F)</b>	50mm
<b>302/2 (F)</b>	32mm

### Retrofit

<b>302/51 (R)</b>	50mm
<b>302/2 (R)</b>	32mm



Most highways applications use the 50mm (302/51) systems to improve discharge capacity.

For any enquiries or advice, please contact us at [enquiry@ekspan.co.uk](mailto:enquiry@ekspan.co.uk) or call 0114 2611126

# - PRODUCT RANGE

## EKSPAN 325 'GALVANISED STEEL'

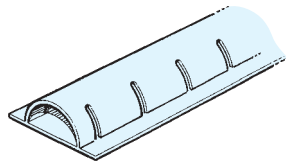
Ekspan 325 is a long lasting galvanised steel fabricated section designed to remove surface water seepage from the waterproof membrane level of bridge decks, most especially at low points adjacent to expansion joints and kerb lines. This system is unique in that it utilises the flushing box which allows cleaning and maintenance vital to system integrity and life time operation

It is designed in accordance with the Highways Agency BA26/94 and fully compatible with the Ekspan 302 Through Deck System.

The system is Blacktop Heat Proof, and polyester resin mortar is used to prevent voids under rail during installation.

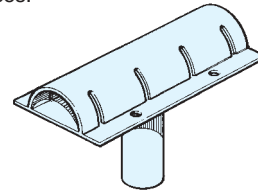
### Drain Section

Can be fitted to any required length - standard unit is 2m long. End stoppers are used at all open ends to prevent ingress of Blacktop.



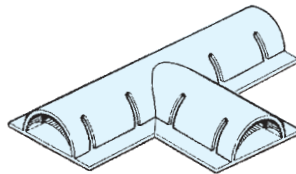
### Outlets

Designed to suit Ekspan 302 through deck tube. Available as straight or 90° cranked. 4-way junctions and T-Pieces.



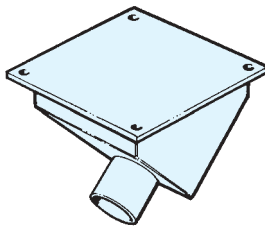
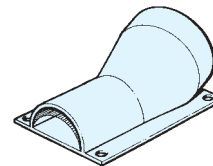
### Joints

Inter-connect drain section on the deck surface. Available as T, cranked joints left hand and right hand Y.



### Transition Piece

For connecting drain section to plastic tube to allow access from flushing unit.



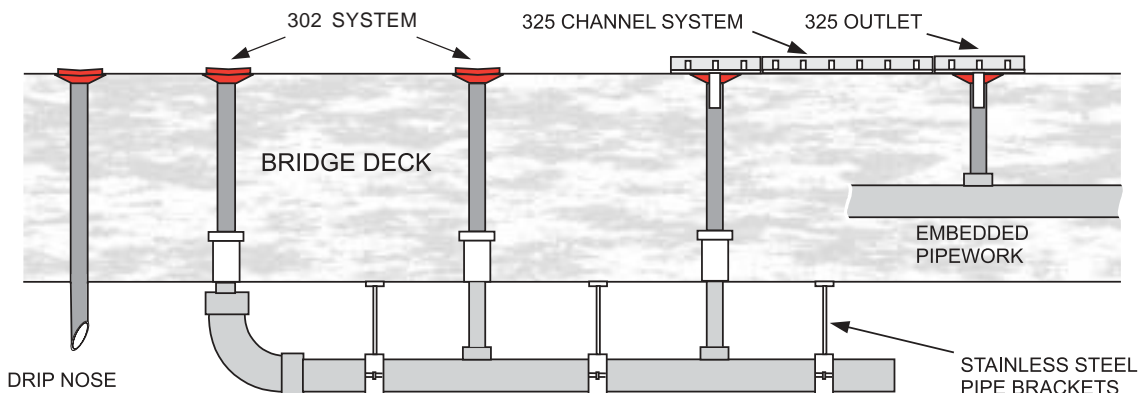
### Flushing Unit Verge Box

Allowing access to system with water jetting equipment for cleaning, removing any silt and evaporative deposits.

Special arrangements can be made to order if required, eg. joints to suit skew angled decks.

## OUTLET ARRANGEMENTS

Below the bridge deck the drain units can be linked to water collection pipes or allowed to drain free below via the drip nose attachment. e.g. over non navigable rivers and streams.



For any enquiries or advice, please contact us at [enquiry@ekspan.co.uk](mailto:enquiry@ekspan.co.uk) or call 0114 2611126